



RECP #: 754603

RECORDED 6/5/2019 AT 3:37 PM BK# 2624 PG# 272
Debra K. Lee, CLERK OF LARAMIE COUNTY, WY PAGE 1 OF 1

STATE OF WYOMING CORNER RECORD

(In compliance with the CORNER PERPETUATION AND FILING ACT, Wyoming Statutes, 1997 Section 33-29-140, et. seq., and the Rules and Regulations of the Board of Registrations for Professional Engineers and Professional Land Surveyors)

NORTHEAST CORNER SECTION 16, T. 17 N., R. 62 W., 6TH P.M., LARAMIE COUNTY, WYOMING

GLO: SANDSTONE 16X12X6 SET 10 IN DEEP MARKED W 4 NOTCHES ON S. SIDE AND 3 NOTCHES ON E. SIDE FOR THE COR. TO SECS. 9, 10, 15, 16.

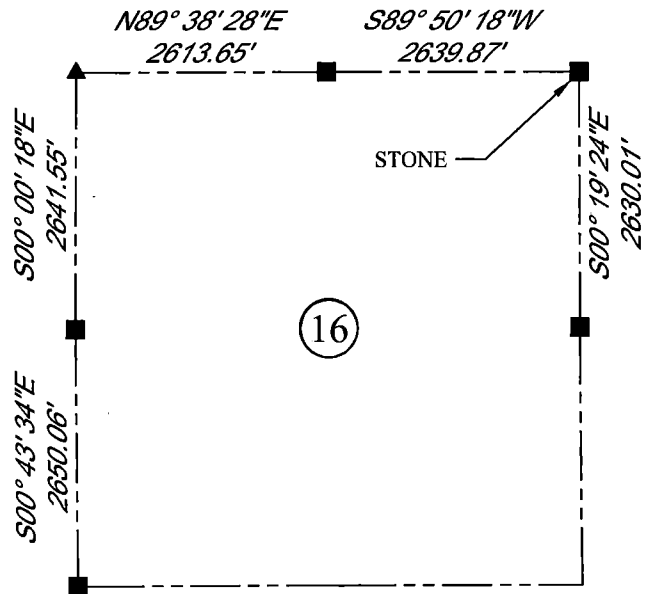
FOUND: STONE. APPROXIMATELY 14X8X7.

SET: NOTHING



SCALE: NONE

NORTH DETERMINED BY
G.P.S OBSERVATIONS



LEGEND:

- FOUND BLM CAP
- FOUND USFS CAP
- FOUND STONE
- FOUND PRIVATE MONUMENT
- ◆ CALCULATED POSITION
- ▲ SET MONUMENT (LS10245)
- SECTION LINE

DATE OF FIELD WORK: 08/30/2018 OFFICE REFERENCE: MERIDEN

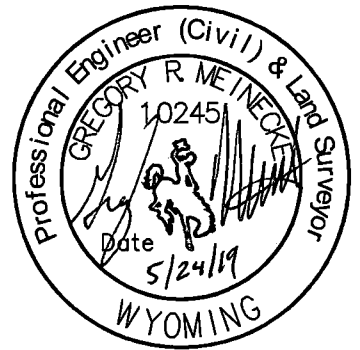
CROSS INDEX DIAGRAM

	1	2	3	4	5	6	7	8	9	10	11	12	13	14	15	16	17	18	19	20	21	22	23	24	25
A																									
B																									
C																									
D																									
E																									
F																									
G																									
H																									
J																									
K																									
L																									
M																									
N																									
O																									
P																									
Q																									
R																									
S																									
T																									
U																									
V																									
W																									
X																									
Y																									
Z																									

WOOD
2615 AVIATION DRIVE
SHERIDAN, WY 82801
PH: 307-675-6400



THIS CORNER RECORD WAS
PREPARED BY ME OR UNDER
MY DIRECTION AND
SUPERVISION,
SEAL AND SIGNATURE



CORNER NAME: NORTHEAST SECTION: 16 T. 17N., R. 62 W. ; 6TH P.M. CROSS-INDEX # J-13
SBRPELS/PLSW: MARCH 1994; PLSW JANUARY 1998